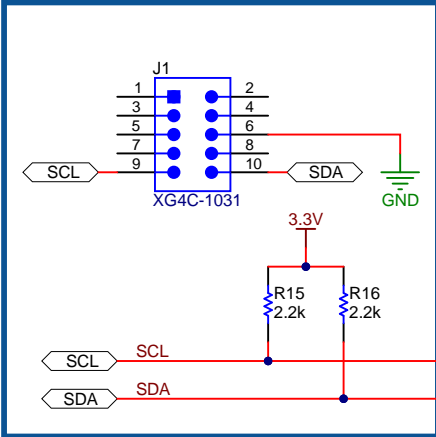
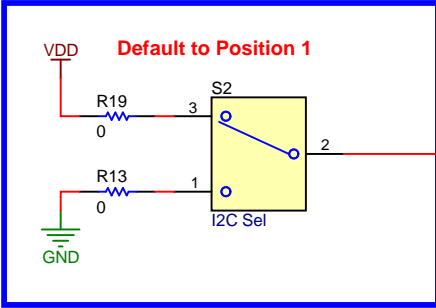


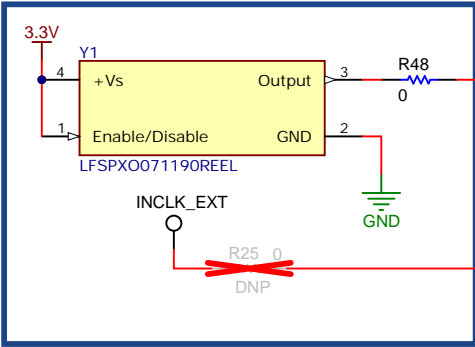
I2C & USB2ANY CONNECTION



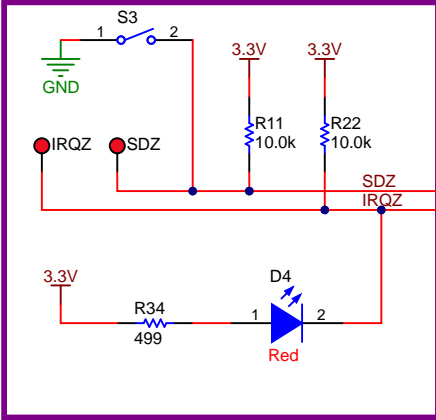
I2C ADDRESS SELECT



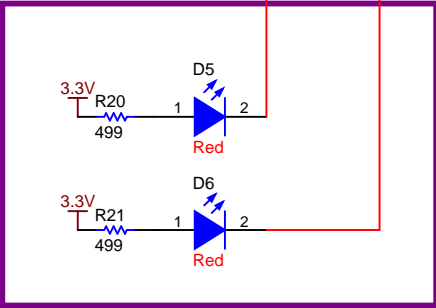
INCLK-10MHz



SHUTDOWN AND INTERRUPT



DRV FAULT LEDs



Texas Instruments and/or its licensors do not warrant the accuracy or completeness of this specification or any information contained therein. Texas Instruments and/or its licensors do not warrant that this design will meet the specifications, will be suitable for your application or fit for any particular purpose, or will operate in an implementation. Texas Instruments and/or its licensors do not warrant that the design is production worthy. You should completely validate and test your design implementation to confirm the system functionality for your application.

| | | |
|---------------------------------|--|----------------------------|
| Orderable: ULC1001-DRV290xEMV | Designed for: Public Release | Mod. Date: 8/2/2024 |
| TID #: N/A | Project Title: ULC1001-DRV2901 | |
| Number: Not in version control | Rev: D | Sheet Title: AMPS175E1_DUT |
| SVN Rev: Not in version control | Assembly Variant: 001 | Sheet: 1 of 4 |
| Drawn By: Engineer: | File: AMPS175D_DUT.SchDoc | Size: B |
| | Contact: http://www.ti.com/support | |

A

B

C

D

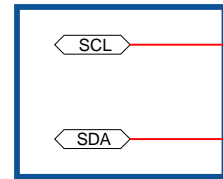
A

B

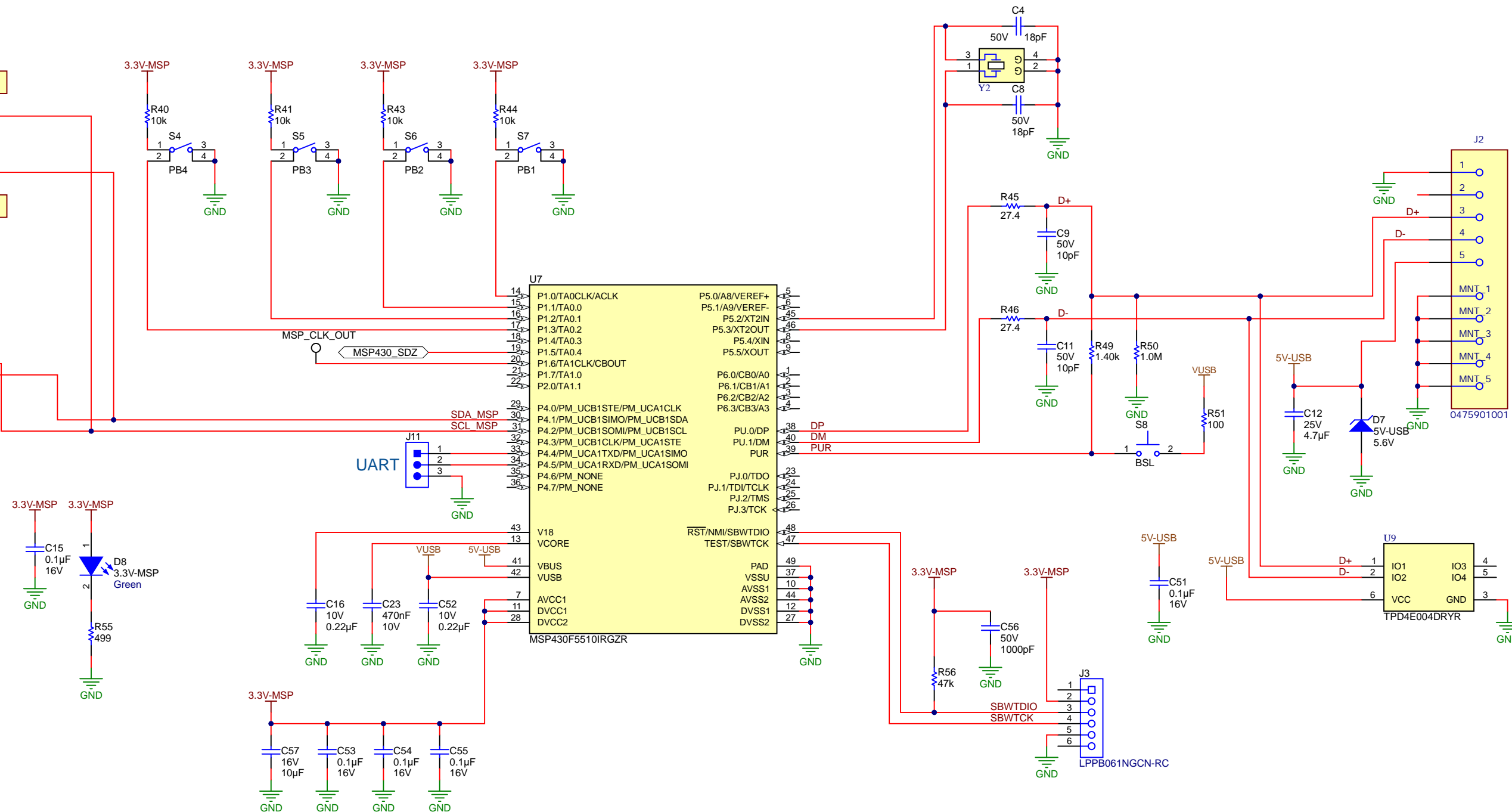
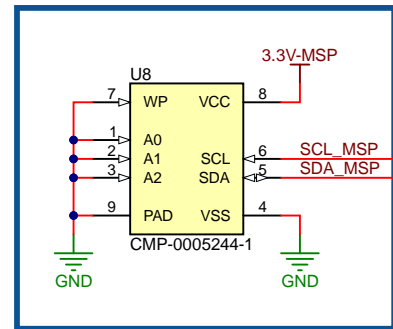
C

D

MSP430 I2C



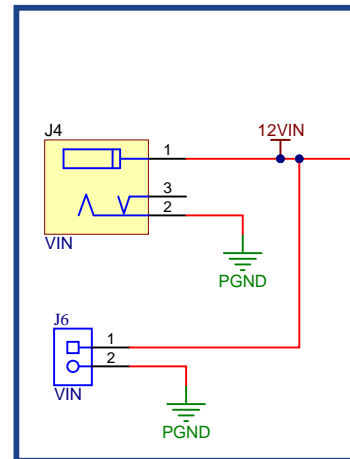
MSP430 EEPROM



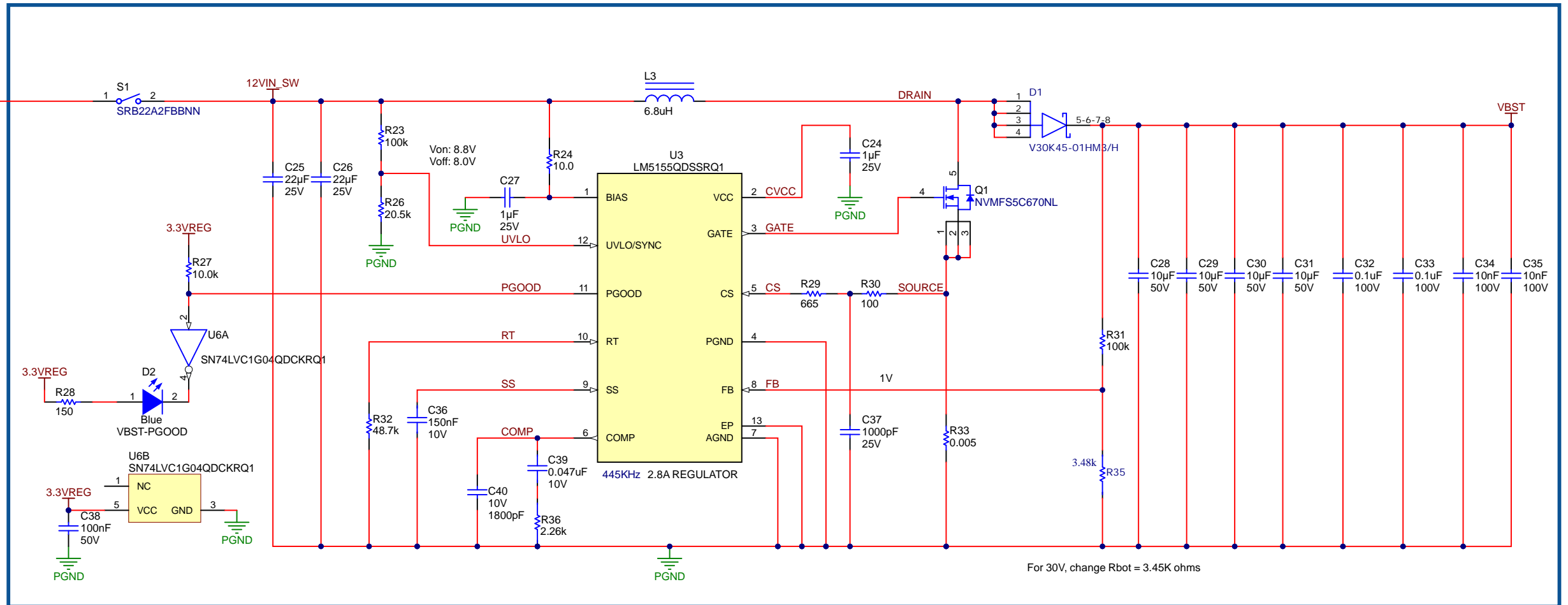
Texas Instruments and/or its licensors do not warrant the accuracy or completeness of this specification or any information contained therein. Texas Instruments and/or its licensors do not warrant that this design will meet the specifications, will be suitable for your application or fit for any particular purpose, or will operate in an implementation. Texas Instruments and/or its licensors do not warrant that the design is production worthy. You should completely validate and test your design implementation to confirm the system functionality for your application.

| | | | |
|---------------------------------|--------|--|---------------------|
| Orderable: ULC1001-DRV290xEVM | | Designed for: Public Release | Mod. Date: 8/2/2024 |
| TID #: | N/A | Project Title: ULC1001-DRV2901 | |
| Number: | Rev: D | Sheet Title: AMPS175E1_MSP430 | |
| SVN Rev: Not in version control | | Assembly Variant: 001 | Sheet: 2 of 4 |
| Drawn By: | | File: AMPS175D_MSP430.SchDoc | Size: B |
| Engineer: | | Contact: http://www.ti.com/support | |

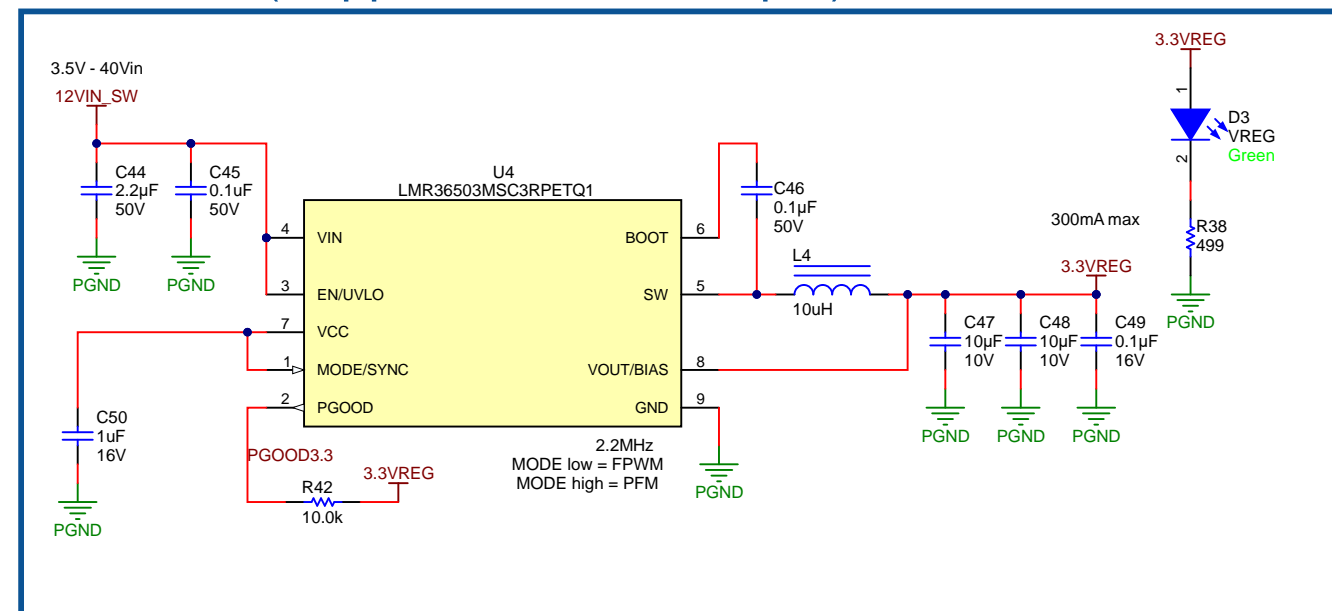
INPUT



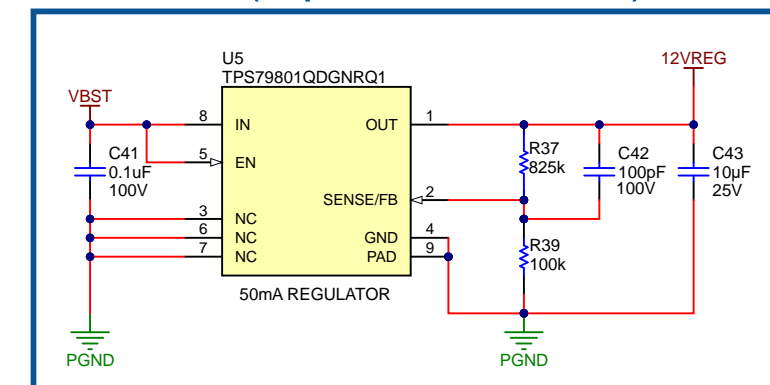
PVDD Boost Output (Supports 9V-15V Input)



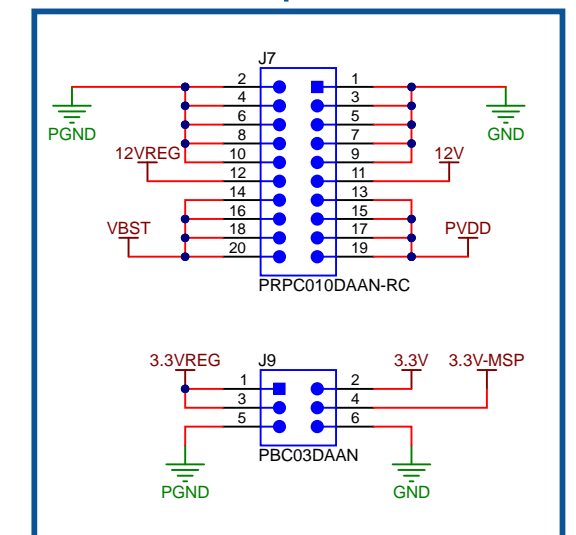
3.3V Buck (Supports 3.5V-40V Input)

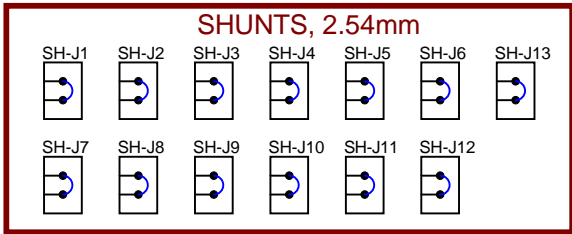
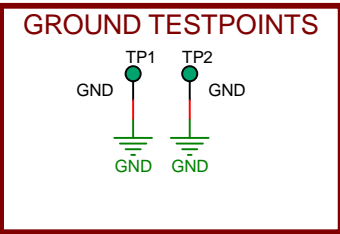


12V LDO (Input from Boost)



Power Jumpers





LBL1
PCB Label
THT-14-423-10
Size: 0.65" x 0.20 "

PCB Number:
PCB Rev: A

PCB
LOGO
Texas Instruments



PCB
LOGO
FCC disclaimer

PCB
LOGO
WEEE logo



| Variant/Label Table | |
|---------------------|--------------------|
| Variant | Label Text |
| 001 | ULC1001-DRV290xEVM |
| 002 | ULC1001-DRV-FL-EVM |
| | |
| | |
| | |
| | |
| | |

ZZ1
Assembly Note
These assemblies must comply with workmanship standards IPC-A-610 Class 2, unless otherwise specified.

ZZ2
Assembly Note
These assemblies are ESD sensitive, ESD precautions shall be observed.

ZZ3
Assembly Note
These assemblies must be clean and free from flux and all contaminants. Use of no clean flux is not acceptable.

ZZ4
Assembly Note
INDICATION FOR COMPONENTS D* ARE GIVEN AT THEIR CATHODE SIDE.